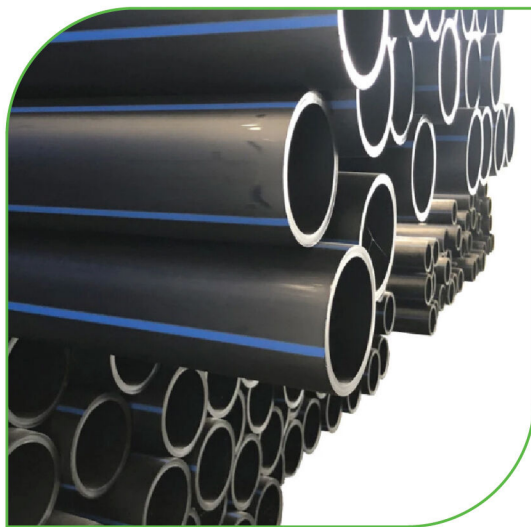


PIPE EXTRUSION PLANT

FLAT DRIP



ROUND DRIP



HDPE PIPE



TUBES - DIP TUBE / DF BARREL



FLAT DRIP IRRIGATION PIPE PLANT

- 0.30 Unit/kg power consumption
- Up to 160,000 - 200,000 meter/day meters/day for Flat pipe
- Thickness Range for Flat Pipe: 0.15 mm to 1.0 mm
- 4 Station Gravimetric Blender with Extrusion Process Control (optional)
- New generation Screw and Barrel ensure stable, Homogeneous melt quality for longer periods throughout the operation
- PLC based machine
- Insertion capacity 600 Drippers/min
- Speed 120 meters/min BIS and up to 200 meters/min non-BIS
- Dropper spacing 20 cm & Above
- High speed & low waste
- Low power consumption
- Fully Servo Driven Flat Drip Line



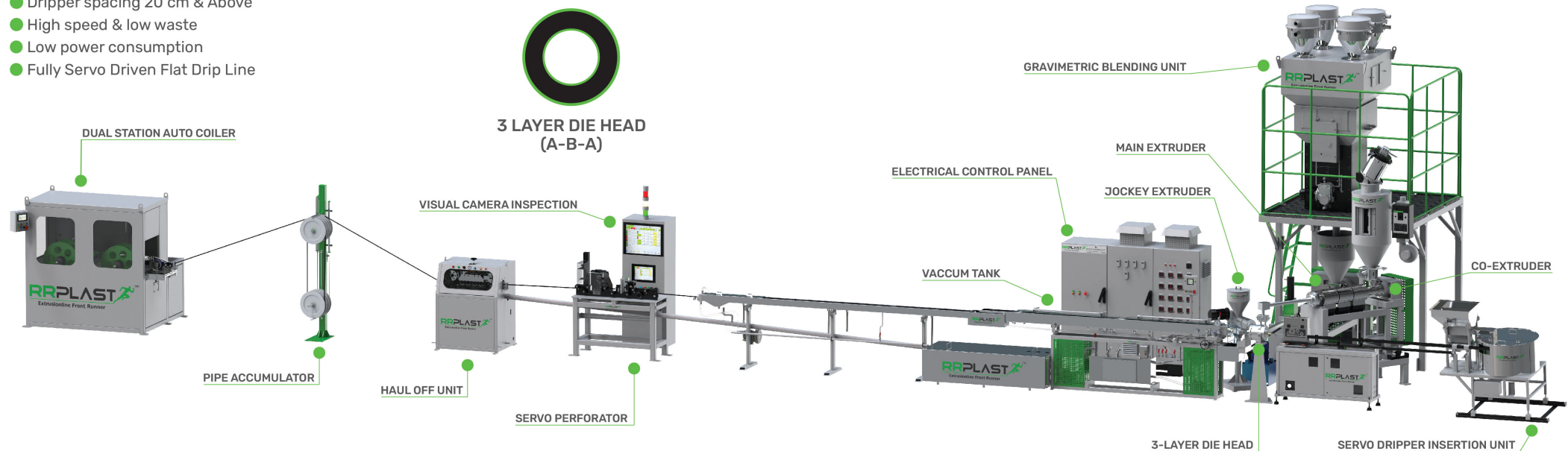
FLAT DRIP COIL & DRIPPER



TWIN HOLE DRIPPER



FLAT DRIP PIPE

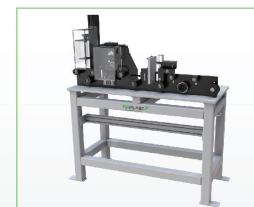


- Uniform spacing/Group spacing/Plain Pipe/Sample features included in PL
- Perforation unit with perforation capacity 600 Drippers/min
- Online visual Inspection system for Perforation and Dropper spacing
- 2-Station Auto Coiler with Synchronized Traversing, Auto pipe cut, and auto bobbin changeover

Main Technical Parameters

Model	Dripper Insertion Speed (mm)	Line Speed (mtr/min)	Output (Kg/h)	Connected Load (kW)
RRPP 45/33-45-150	600	150	Up to 150	113
RRPP 65/33-75-200	600	200	Up to 250	158

Note: The specification are subjected to change without prior notice



FLAT DRIP PERFORATION UNIT



FLAT DRIPPER INSERTION UNIT



DUAL STATION AUTO COILER

ROUND DRIP IRRIGATION PIPE PLANT

INLINE / ONLINE

- 100,000-120,000 meter Inline Pipe Production/ Day.
- 0.30 unit/kg low power consumption.
- Extruder Throughput for pipe up to 250 Kg/h
- Machine Line speed: 80-100 Mpm.
- Belt Type Servo Insertion with insertion capacity 400 Drippers/Min.
- Servo Perforation unit with a drilling capacity of 400 Drippers/Min.
- Precise speed control Haul-off unit.
- Coil-to-coil weight variation is within $\pm 0.5\%$ of coil weight.
- PLC-based machine.
- The perforator can drill 1, 2, 3, and 4 holes as per the customer's requirements.



ROUND DRIP COIL & DRIPPER



ROUND DRIP PIPE



ROUND DRIP PIPE USE



- Wall thickness 0.4 mm - 2 mm
- Dripper spacing 20 cm & above
- Fully servo driven round drip line
- High speed & more consistency
- Pipe 12 | 16 | 20 mm (32 mm also possible)
- 3-Layer (A-B-A) Pipe Die Head



3 LAYER DIE HEAD
(A-B-A)

Main Technical Parameters

Model	Pipe Size (mm)	Output (Kg/h)	Line Speed (Mtr/h)	Consumed Load (kW)
RRPP - 65/33	12-32	250	80-100	56

Note: The specification are subjected to change without prior notice



SERVO PERFORATOR



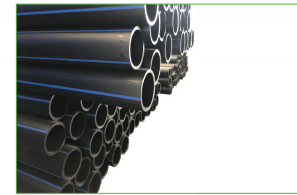
ROUND DRIPPER
INSERTION UNIT



2 STATION
SEMI AUTO COILER

HDPE, PPR PIPE EXTRUSION PLANT

- Next-generation barrier screws with longer L/D (33/36/40 D) are standard for Polyolefins
- PE 63/80/100 - grade processing possible
- Accurate control of the melt conditions, homogeneous temperatures and pressures without variation, surging & low thermal stresses
- Consistent throughput for all screw speeds
- The drive motor and the gearbox can be directly coupled or belt driven as per torque requirement to achieve the optimum efficiency to reduce the power consumption per unit output
- The screws and barrels are normally supplied in nitrided steel. Bimetallic high wear-resistant barrels can be supplied for high-speed extruder
- Special design 3-layer pipe plant (A-B-A or A-B-C)
- Model range 20 mm to 110 mm, 63 mm-200 mm, 75 mm, 315 mm
- Output 200/300/400/500/750 kg/h



SPRINKLER & WATER SUPPLY PIPES



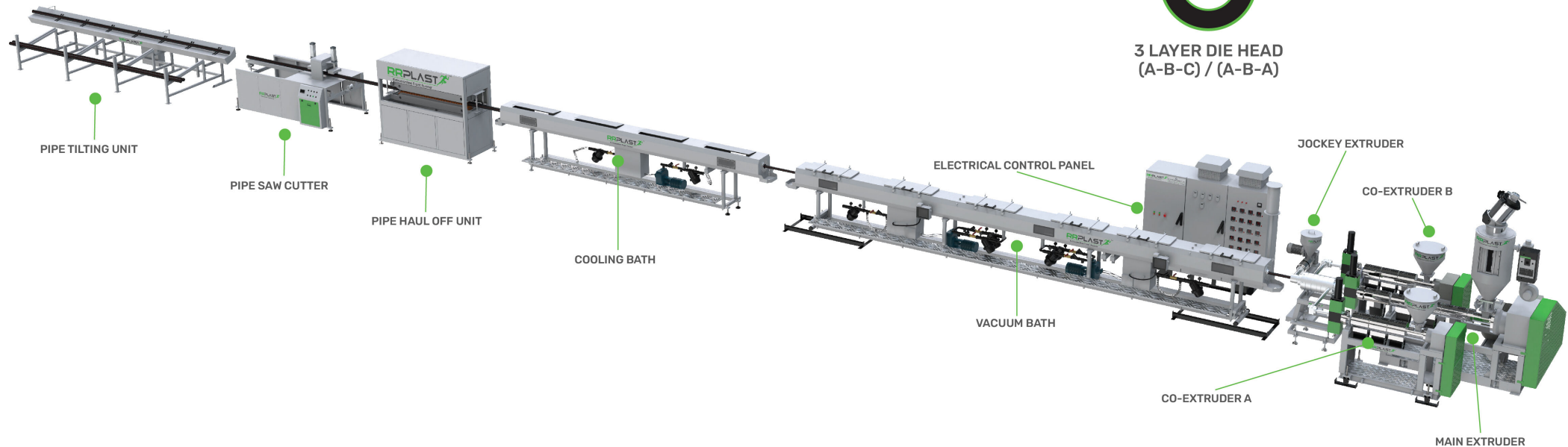
PE GAS PIPE



3 LAYER PPR PIPE



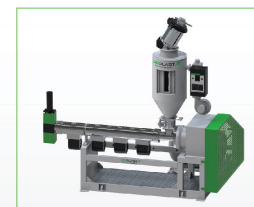
3 LAYER DIE HEAD (A-B-C) / (A-B-A)



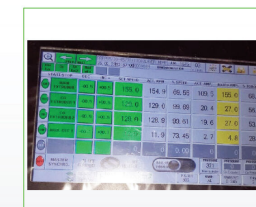
Main Technical Parameters

Pipe Size (mm)	Layer	Output (Kg/h)	Material
20-315	Mono / Multilayer (A-B/A-B-A/A-B-C)	250-750	PE63/PE80/PE100

Note: The specification are subjected to change without prior notice



GROOVED FEED HIGH OUTPUT EXTRUDER



PLC AUTOMATION



PLANETARY SAW CUTTER (SWARLESS)

PE RAIN PIPE EXTRUSION PLANT

Latest and advanced Fiber laser punching/Perforation machine suitable for 70 meters per minute line speed with a computerized graphic control device (Computer interface suitable for 70 MPM punching)

Holes in rain pipes are made with nano-punching technology to ensure a uniform flow of water on every side

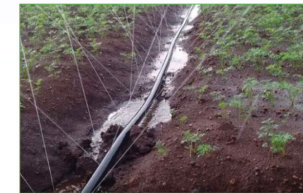
Two station winder with variable torque drive suitable to winding rain pipe as well as LLDPE delivery pipe.

Features

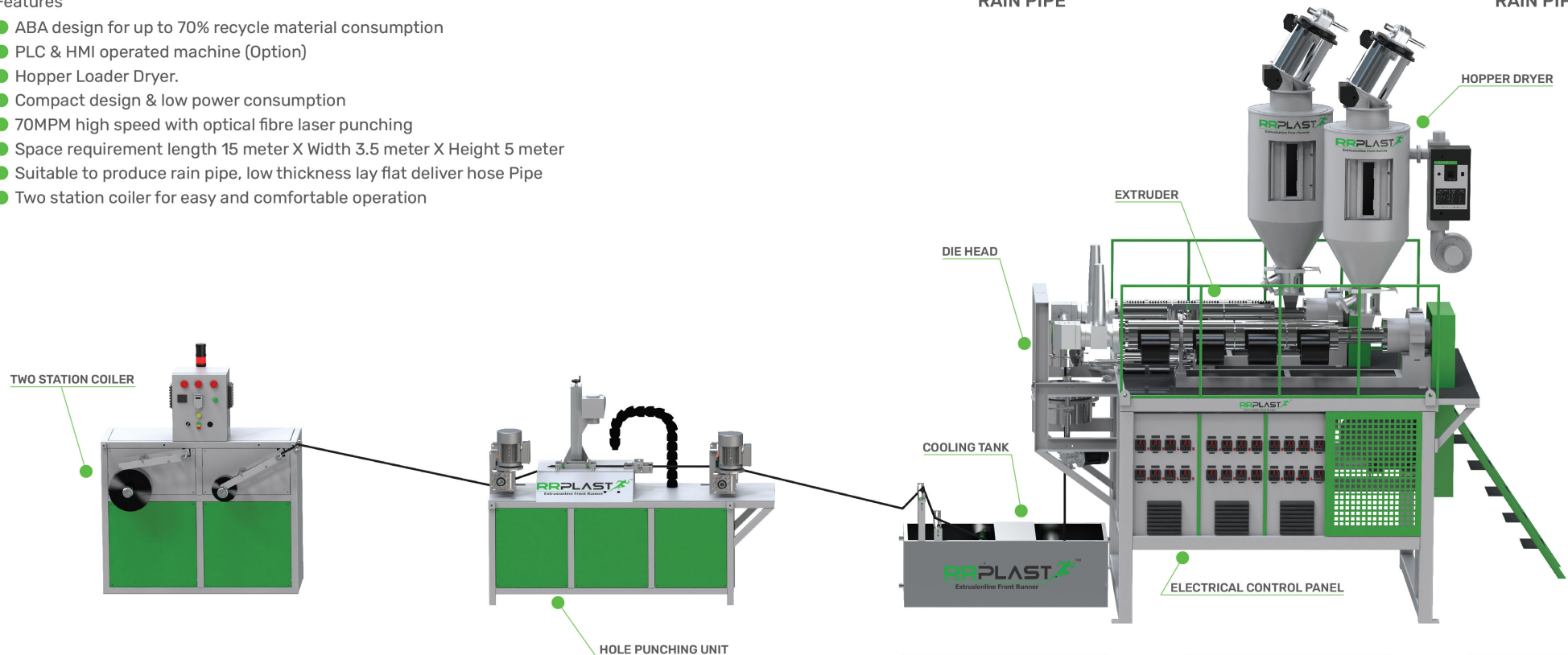
- ABA design for up to 70% recycle material consumption
- PLC & HMI operated machine (Option)
- Hopper Loader Dryer.
- Compact design & low power consumption
- 70MPM high speed with optical fibre laser punching
- Space requirement length 15 meter X Width 3.5 meter X Height 5 meter
- Suitable to produce rain pipe, low thickness lay flat deliver hose Pipe
- Two station coiler for easy and comfortable operation



RAIN PIPE



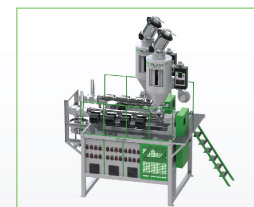
RAIN PIPE USE



Main Technical Parameters

Pipe Size	20 mm to 63 mm Rain Pipe 63 mm to 75 mm Hose Pipe
Speed	30-70 mtr/min
Output	30/80 Kg/h
Layer	3 Layer (A-B-A) With Stripe
Power	40 kW

Note: The specification are subjected to change without prior notice



3 LAYER EXTRUDER SYSTEM



LASER PUNCHING UNIT



PRECISE PIPE COILER

PRECISION TUBE EXTRUSION PLANT

D/F BARREL, POLO BARREL, REFILL TUBE, LOLLIPOP STICKS, DIP TUBE, INDUSTRIAL TUBE

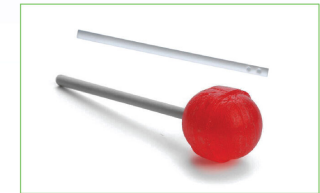
- Material PP, HD, LD, EVA, TPE etc
- Tube Size 2 mm - 20 mm
- Mono Layer or Multi-Layer
- Speed up to 70 meter min or 1000 cuts/min
- Pipe dimension accuracy ± 0.05 mm
- Pipe cutting accuracy with a single blade ± 0.5 mm
- Precise vacuum control
- Melt pump for better control of flow
- Servo-driven coiler for special applications
- Servo cutter for high speed, accuracy & less waste
- Output 30/50 kg/h



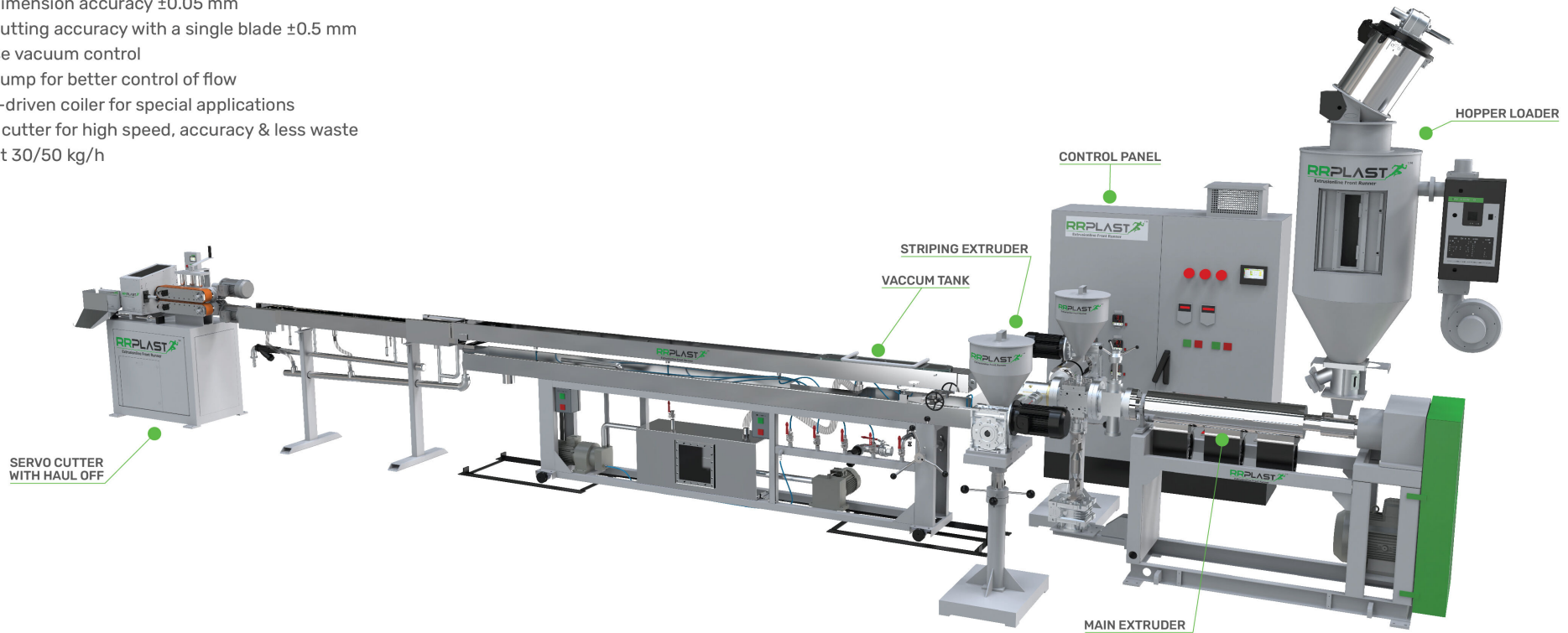
DIP TUBE



D/F PEN BARREL/REFILL



LOLLIPOP STICK



Main Technical Parameters

Model	O/P (cuts/min)	Output (Kg/h)
RRPP-50/25/25 (Three color)	80-100 cuts/min - D/F Pen Barrel	25-30
	200-250 cuts/min - Polo Barrel	
RRPP-50	300-500 cuts/min - Refill	15-30
	800-1000 cuts/min - Lollypop stick	

Note: The specification are subjected to change without prior notice



TUBE COILER



JOCKEY EXTRUDER FOR STRIPE/LINE

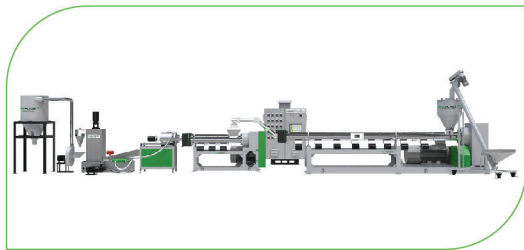


SERVO CUTTER

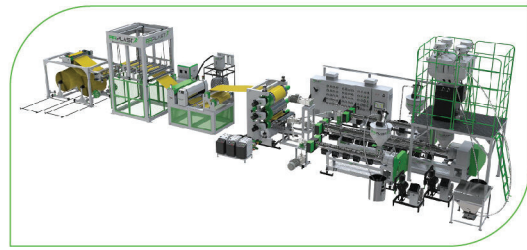
INDIAN AT HEART - GLOBAL IN SPIRIT



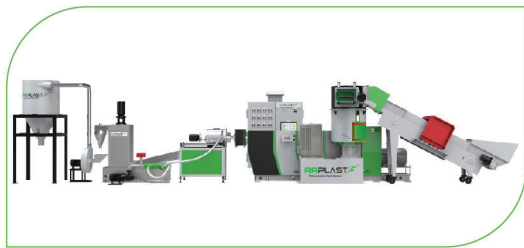
EXPORT TO MORE THAN 60 COUNTRIES



VENTED RECYCLING PLANT



PP, PS SHEET LINE



DIRECT FEED RECYCLING PLANT



ROTO COMPOUNDING PLANT

RRPLASTTM
Extrusionline Front Runner

40
YEARS OF INNOVATION

R.R. Plast Extrusions Pvt. Ltd.

Manufacturer & Exporter of Plastic Extrusion Machinery & Equipment

Head Office: 403/404, 4th Floor, Dilkap Centre, Sakinaka, Andheri - Kurla Road, Andheri (E) Mumbai, Maharashtra, India, Pin - 400072.

Factory: Survey No. 164/4, 12/1, NH-3, Behind Hotel Pariwar Garden, Village Asangaon (W) Shahapur, Thane, Maharashtra, India, Pin - 421 601

+91 8828108583 +91 8657508968 info@rrplast.com www.rrplast.com

